

Considering replacing your microfilmer? Tired of paying the price for film, development, transportation, and storage?

With today's technology you no longer need to save your documents on microfilm, instead you can now save them as digital images. Like your old microfilmer, you can still scan checks, loan documents, signature cards, payment information, vouchers, and credit files. Any document ranging from a business card to a legal size document from onionskin to card stock. Because these documents are now digital, you can archive them on-line, on a CD, or transmit them to a central repository. Later if necessary you can retrieve, reprocess, print, and email any of your stored documents.

The Panasonic KV-S2026C and the KV-S2046C scanners are compact, durable, and have advanced image-processing features at a reasonable price. Both scanners have superior imaging & paper handling making them ideal desktop solutions for microfilm replacement, file management, and other critical image processing applications.

The Panasonic is perfect for a multitude of business entities such as Banks, Churches, Security Firms, Utilities, Municipalities, Hospitals, Insurance Agencies, Manufacturing, Transportation, and many more types of businesses.

Combined with Maverick's Simple Image Plus software, these scanners allow you to scan, archive, and retrieve documents in seconds rather than hours or days. By eliminating the expense and fuss of developing microfilm, you can better serve your customers.



ADDITIONAL FEATURES

- Full Color Duplex Scanning
- Automatic De-Skewing
- Automatic Cropping
- Advanced Color Drop Out
- Dynamic Threshold Technology
- USB 2.0 & Ultra SCSI Interface

Which Model is right for you?

	KV-S2026C	KV-2046C
Duplex Imaging (front/back)	✓	✓
Color, Gray Scale & Binary Output	✓	✓
Scanning Speed - Images Per Min	42	76
Paper size (2 x 2.8 - 8.5 x 14)	✓	✓
Daily Duty Cycle (pages per day)	4,400	6,000
Memory	8 MB	64 MB
Autofeeder Capacity	120 pages	120 pages
Double Feed Detection		✓
1 Year Warranty	✓	✓

Normally data contained on checks with backgrounds of various colors and patterns are difficult to read once scanned. However, the Panasonic automatically adjusts the background to provide a readable image. By dropping out the background colors, a check image can be presented clearly, providing effective use of OCR and Simple Image Plus applications.

When scanning imperfect or irregular documents, advanced de-skew technology helps smooth jagged edges allowing character edges to be crisp and precise. The automatic cropping technology allows you to capture only the actual document and not excess image data, eliminating unnecessarily large file sizes.

The feed rollers provide reliable processing of irregular paper sizes and weight from 10.7 lbs to 33.9 lbs, and supports carbonless paper. Thus, allowing documents of various sizes and thickness to be scanned in one batch. The Panasonic scanners have a unique clamshell design that allows for quick and easy maintenance.



SPECIFICATIONS

Dimensions: Length: 19.2 inches
KV-S2026C Width: 13.5 inches
 Height: 10.6 inches
 Weight: 18.7 pounds

KV-S2046C Length: 19.2 inches
 Width: 13.5 inches
 Height: 10.6 inches
 Weight: 20.1 pounds

Paper: Business Card to 8.5" x 14"

Scanning Speed:* KV-S2026C - 42 pages per min.
 KV-S2046C - 76 pages per min.

Resolution: 100 - 600 dpi

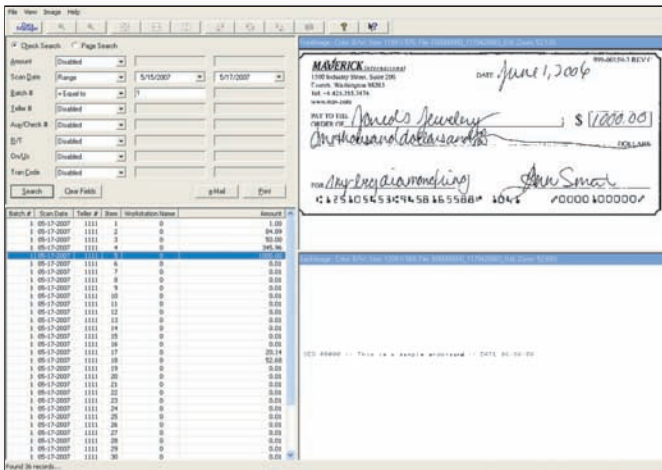
Output: Binary mode, Gray Scale mode, 24 bit color

Feed Tray Capacity: 120 sheets of paper

Interface: Dual port support SCSI III HD50 / USB 2.0

Power: AC 100-240 V, 50/60 Hz

* The scanning speed may differ depending on the host computer operating environment or application.



Nationwide Sales and Customer Support

The full line of Maverick Products are sold and serviced nationwide by a highly trained and professional network of Maverick Distributors. For more information about the MICR V series and other products please contact your local authorized Maverick Distributor or the Maverick corporate office.

Your authorized Maverick Distributor is: